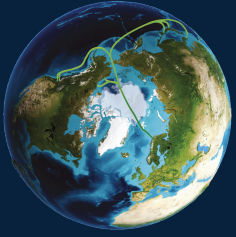


**POLAR
CONNECT**



Polar Connect
Step 2 has
officially
kicked off!





**POLAR
CONNECT**

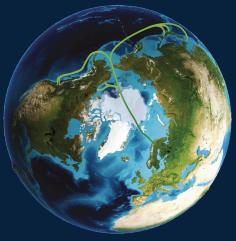


Photo credit: Vicent Doñate Felip

A new phase begins

Polar Connect Step 2
(24-EU-DIG-PC2) officially
marks the start of a 36-month
project focused on preparing
the next steps toward a
resilient Arctic submarine
cable.





**POLAR
CONNECT**

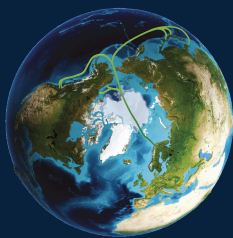


**Co-funded by
the European Union**

Backed by European funding

PC2 is supported by **€4.97 million** in EU funding through the Connecting Europe Facility (CEF Digital), with a total project budget of **€9.94 million.**





**POLAR
CONNECT**

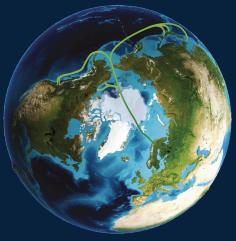
A strong Nordic– European consortium

PC2 brings together research networks, Arctic experts, and infrastructure partners from across Europe.



ASSOCIATED PARTNER:





**POLAR
CONNECT**

What this phase is about

During PC2, the consortium will:

- study the optimal Arctic cable route,
- analyse cable resilience and repair in ice conditions,
- and prepare the foundations for future deployment.



Photo credit: Adam Andersson